

whole-home wireless

High-Performance.
Robust. Reliable.

pakedge 





why the network matters

From maintaining a comfortable temperature, to streaming music and movies and even keeping our homes safe and secure, there is an ever-growing ecosystem of products on which we rely that are becoming smarter and more sophisticated.

Without a reliable and efficient network, even the smartest devices are rendered dumb. Each connected device adds strain to a home network, impacting both the throughput and, ultimately, the availability of a wireless connection within the house. This is why the network has quickly become one of the most important systems in your home.

58% of homeowners say
“It’s a nuisance for everyone”
when the Internet goes down.

—Control4 Customer Survey 2016

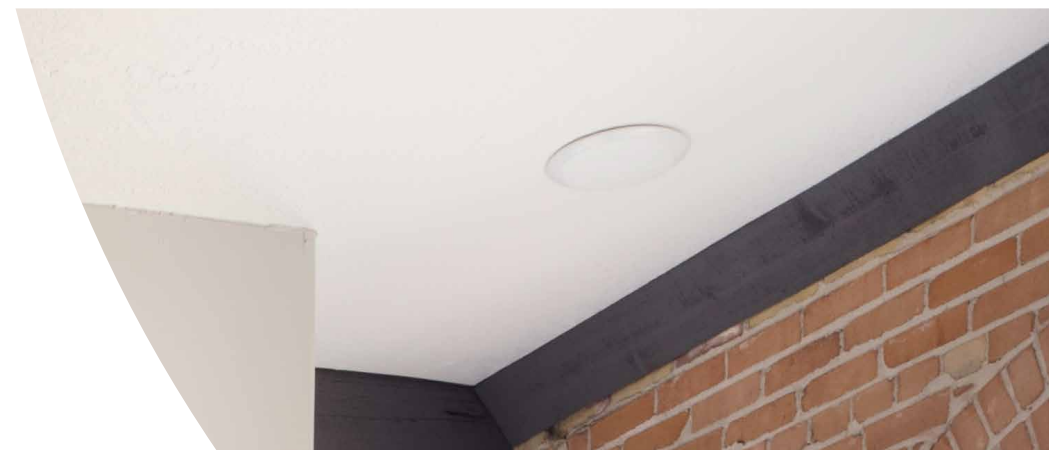
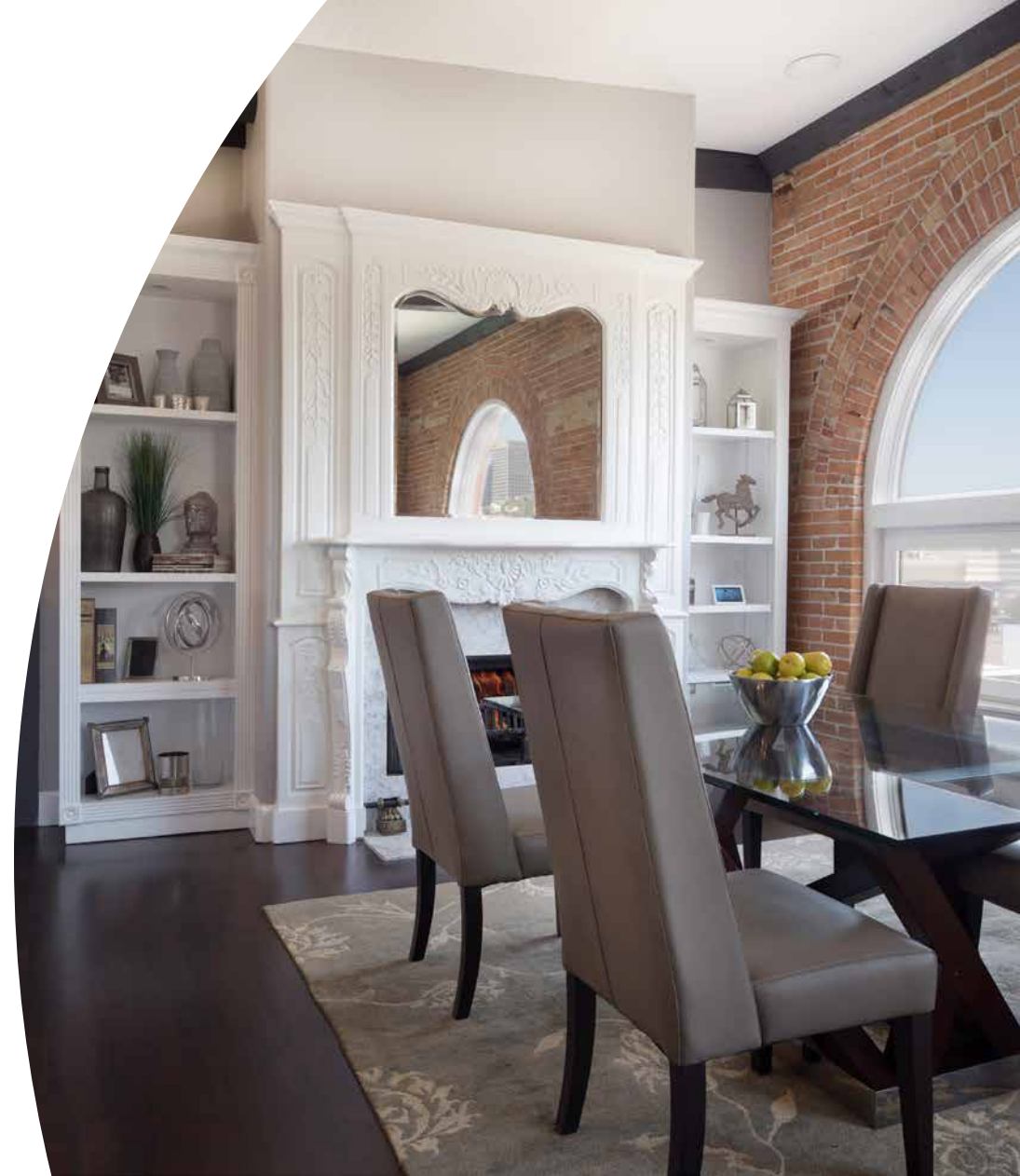
not all networks are created equal

Many homeowners are accustomed to using networking hardware provided by their Internet service provider or consumer brands found at a local retailer. These consumer-grade commodity products are built for a one-size-fits-all approach and compromise the speed, performance, and reliability of a network.

Consumer-grade networks, built as low-cost solutions, are not designed to meet the demands of modern connected homes. More robust networks are designed from specialized components—routers, switches, and wireless access points—that are built to support smart home, audio and video traffic.

Your smart home needs a network that is scalable, adaptable, intuitive, and ready to perform.

A strong network foundation will ensure that all of your automated conveniences, audio and video luxuries, and security systems are reliable and functioning optimally. With a network designed for smart homes, you can alleviate strain caused by video buffering, missed beats, application freezing, and slow response times. With a Pakedge network, the comfort and performance of your modern home is optimized.



the pakedge difference

Pakedge high-performance networks are designed to be fast, reliable, and customizable so that every inch of your home receives a strong and consistent signal capable of handling even the most sophisticated types of network traffic, such as audio and video data and home automation systems.

Utilizing high-performance processors, radios, and transmitters, Pakedge wireless access points offer faster speed, more simultaneous connections, and greater throughput per device than most consumer-grade networking products. Added to this hardware is proprietary Pakedge programming, designed to better manage the bandwidth-consuming audio and video demands of a connected home.

When these sleek and powerful wireless access points are placed around your home, the connectivity is improved.

- High-performance radio, processors, and transmitters.
- Programming designed for AV and home automation systems.
- Enterprise-quality construction with elegant aesthetic.
- A network designed to handle the many types of data in your home, especially AV and automation traffic.

By 2020 there will be
34 billion devices
connected to the Internet.

—Business Insider 2016



throughput

Throughput determines how quickly data can pass through the network. The greater the throughput, the faster the network can process the data that is being used by the connected devices. A greater throughput translates to a more instantaneous response time, even while multitasking.

The Pakedge Impact

- Utilize the full speed provided by your Internet service provider.
- Faster uploads and downloads.
- Smooth streaming whether broadcasting a live video, Skyping, or enjoying 4K video and audio.
- Responsiveness when using applications and devices, even while multitasking.

Benefits

- Audio and video streaming in your home theater is smooth and unimpacted by the other connected systems in your home.
- Downloading music or video game updates won't disrupt streaming during your family TV time or slow down automation responsiveness.
- It's easy to share special events in your life with your family and friends no matter how far away. With Pakedge, streaming live video is smooth, and uploading videos and photos is lightning fast.



Highlighted Features

Premium-quality processors, radios, and transmitters for high-performance throughput.

Advanced traffic management for high-bandwidth and sensitive traffic.

capacity

Capacity is the number of devices that can effectively connect to the network without impacting performance. High capacity means a network is able to provide optimal throughput to all connected devices. Low-capacity wireless networks get bogged down and sluggish, especially when using systems that require many connected devices.

The Pakedge Impact

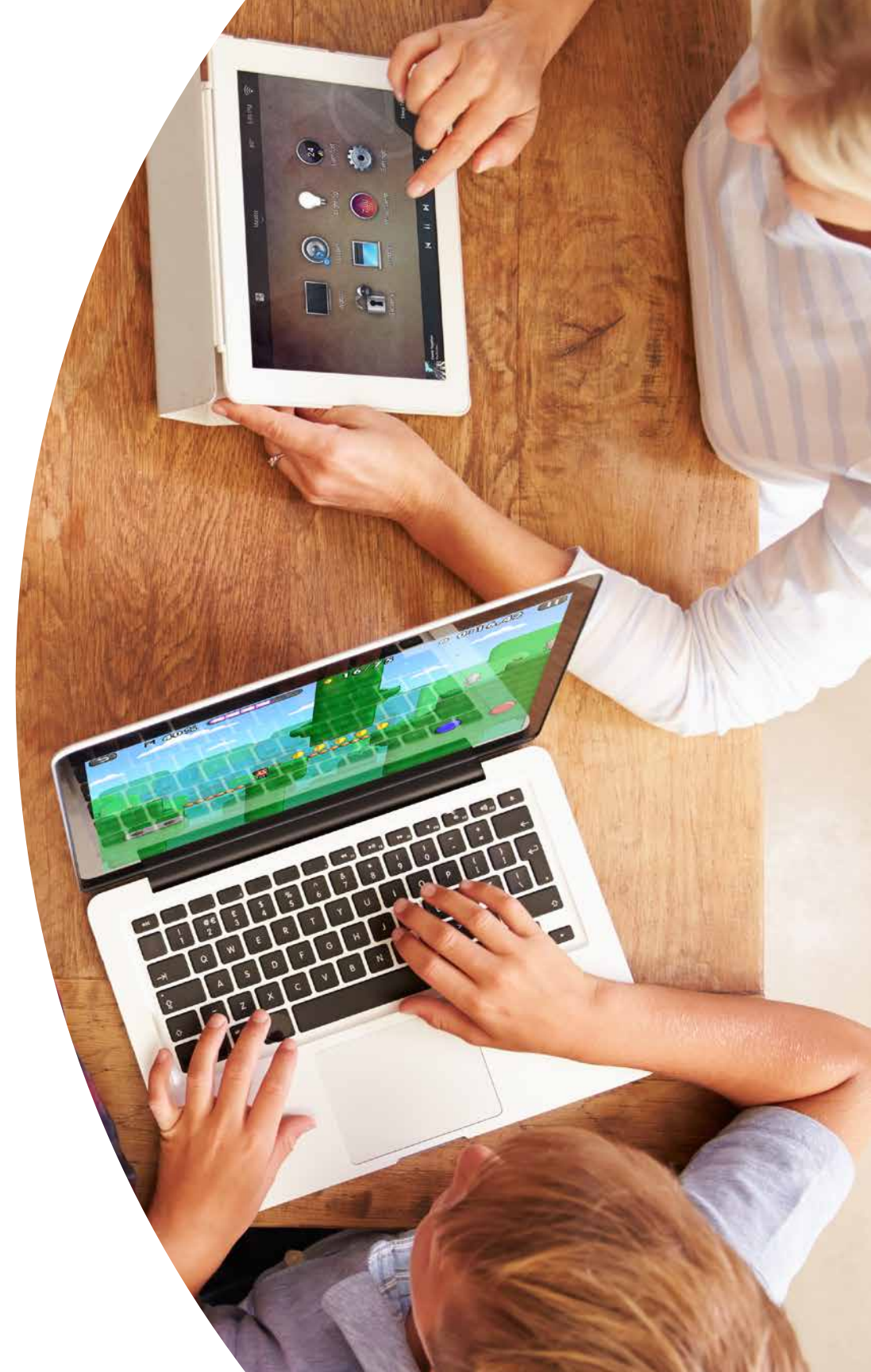
- Manage more devices simultaneously.
- More capacity to support existing and future devices.
- Robust connection and throughput for all devices.

Benefits

- New gadgets you bring home won't slow down connectivity, and cool, new systems can be easily accommodated.
- Optimize throughput even with a full house. Party guests and study buddies will love being able to use their own devices without slowdown.

Highlighted Features

High-performance processors and RAM support a greater quantity of connected devices more effectively.



coverage

Coverage is the area or range covered by the wireless signal. Good coverage leaves no corner, garage, or pool house without wireless. Good coverage means having a strong and consistent signal with undiminished throughput as you move around your property.

The Pakedge Impact

- Fix dead zones and signal drop-off.
- Seamless signal connection throughout your property.
- More effective and reliable coverage rather than coverage that sacrifices signal quality.

Benefits

- Good coverage lets users get work done or enjoy movie and music streaming—even while outdoors or in the furthest corners of their home—without experiencing any sluggishness.
- Get work done poolside while enjoying the sun and watching the kids.
- Move about your home without missing a beat or dropping connections.



Highlighted Features

Omnidirectional antenna designed so each wireless access point can deliver coverage up to 2,000 square feet (186 square meters).

Advanced roaming for seamless connectivity as you move throughout your property. Also assists with brands of mobile devices that are prone to drop-offs.

Sleek designs that blend into your home's architecture so devices can be optimally placed without taking up space or being an eyesore.

security

Your wireless network should have robust features and latest encryptions that will protect your personal data and also help you maintain total control over your network.

The Pakedge Impact

- Guest networks limit visitor access and help to protect your sensitive data.
- Device filtering allows you to control who may have access to your network.
- Use scheduling to turn your wireless network on and off in particular areas of the house.
- Includes the latest security encryption standards for secure wireless networking.

Benefits

- Guests can connect to a safe wireless zone separate from your personal data and accounts. No need to share your connection or password.
- Use device filtering to block specific devices that you suspect to be untrustworthy or use it as a parental control when the kids are grounded.
- Decide when your wireless network is accessible with wireless scheduling so no one can connect after hours.
- Keep your data safe with a variety of encryption standards.



Highlighted Features

Up to 16 SSIDs plus two guest networks.

MAC filtering to block untrustworthy devices.

Latest security encryptions: WPA2 PSK and WPA2 Enterprise.

reliability

Consistent, effective, and responsive—a reliable wireless network won't let you down. A reliable wireless network that is always performing at its peak can be trusted to link you to the devices and applications that bring your family comfort, connection, and security.

The Pakedge Impact

- Connected devices are responsive and perform more intuitively.
- Home automation, AV, and security systems perform effortlessly and make your home life comfortable, luxurious, and secure.
- Improved communication when using Internet services.
- Consistent experience with modern home enhancements.

Benefits

- Wireless-based security systems and utilities have a dependable connection so your home is safe and efficiently managed.
- Less stress and time spent troubleshooting issues or waiting for sluggish connections. More time spent being productive or enjoying time with friends and family.
- FaceTime and Skype sessions with family and friends are crisp and reliable, no matter where you are or how many other devices are connected.



Highlighted Features

Industrial-quality housing and premium-quality components constitute durability and product longevity in addition to reliable and powerful signal strength.

When paired with the BakPak® remote management system, your wireless system and other network devices can self-heal and the health of your network can be monitored by your network or smart home specialist.

routers

Your router connects to your network to the Internet and acts as the brain of your network—directing data to the right device. To get the most out of your network, you need a router that can handle high-bandwidth, low-latency multimedia traffic.

switches

Switches bring out the true performance of your connected devices, allow flexibility for wired connections and, in some cases, even power your devices. Pakedge switches are designed to process audio and video network traffic more efficiently and at higher speeds to eliminate lag, jitter, and buffering when streaming audio and video.

wireless

High-performance wireless access points provide coverage throughout the home and enterprise-level wireless communication between all devices within a network. Wireless controllers can be used for more robust security and parental controls or can be used to optimize traffic in busier environments.

power

Power distribution units provide centralized power control to ensure all system critical equipment is properly powered and managed. Because power control is the first-line of defense in bringing critical devices back online, the PowerPak™ PDUs offer surge protection, individual outlet management, remote power cycling, and self-healing features.

Managed Networks

Pakedge's BakPak® Remote Management System can help your technology professional monitor the health of your network, keep the software up to date, and in many cases fix your network remotely without having to come out for a service call. BakPak can even self-heal certain issues without any manual intervention.

bakpak®

This means your network—the foundation of your connected home—is always running smoothly. BakPak is a powerful

tool designed to make your home network more effective and efficient. BakPak is an exclusive part of Pakedge networking products. Ask your technology professionals how they use BakPak to provide world-class support and reliability.





Phone: 09 216 7716
Website: taylordelectrical.co.nz
Email: info@taylordelectrical.co.nz

PO Box 38558, Howick,
Auckland, 2145
New Zealand

Your connection to the future

pakedge 



Copyright ©2017, Control4 Corporation. All rights reserved. Control4, the Control4 logo, the 4-ball logo, BakPak, and Pakedge are registered trademarks or trademarks of Control4 Corporation or its subsidiaries in the United States and/or other countries. All other names and brands may be claimed as the property of their respective owners. All specifications subject to change without notice. PE-LIT-WHW-EN A